

J.S. Bach
Präludium und Fuge e-Moll BWV 548

Bass

Bearbeitung: Ernő Pasztor

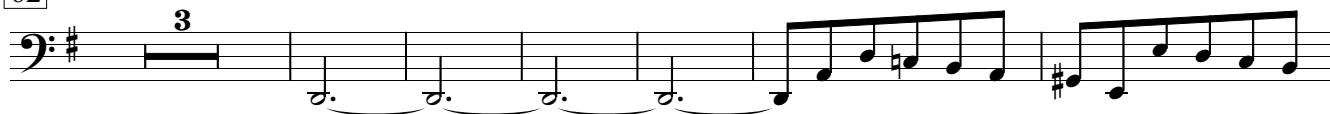
Präludium

The image displays the musical score for the Bass part of the Prelude from J.S. Bach's BWV 548 in E minor. The score is written in bass clef with a key signature of one sharp (F#) and a 3/4 time signature. It consists of 47 measures, organized into ten systems. The notation includes various rhythmic values such as quarter notes, eighth notes, and sixteenth notes, as well as rests and accidentals. Measure numbers 7, 13, 17, 22, 27, 32, 38, 44, and 47 are indicated at the beginning of their respective systems. The piece concludes with a final chord in measure 47.

55



62



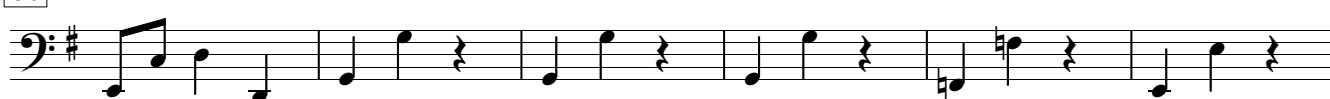
71



75



80



86



94



99



104



108



115



127



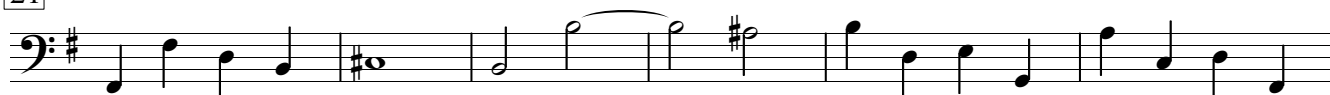
132



Fuge



21



27



32



36



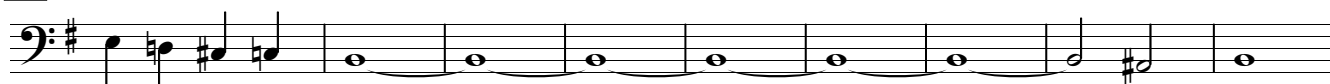
41



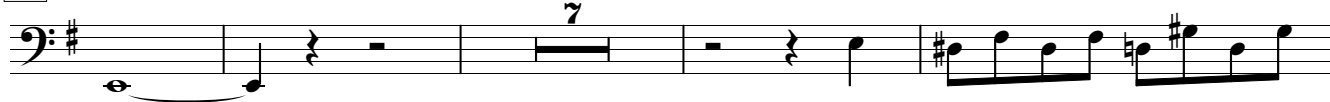
45



50



59



70



81



86



93



103



110



115



120



126



132



137



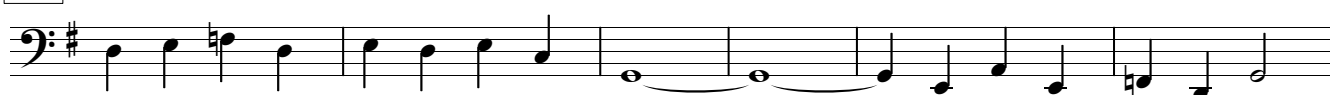
142



148



154



160



166



172



191



196



201

